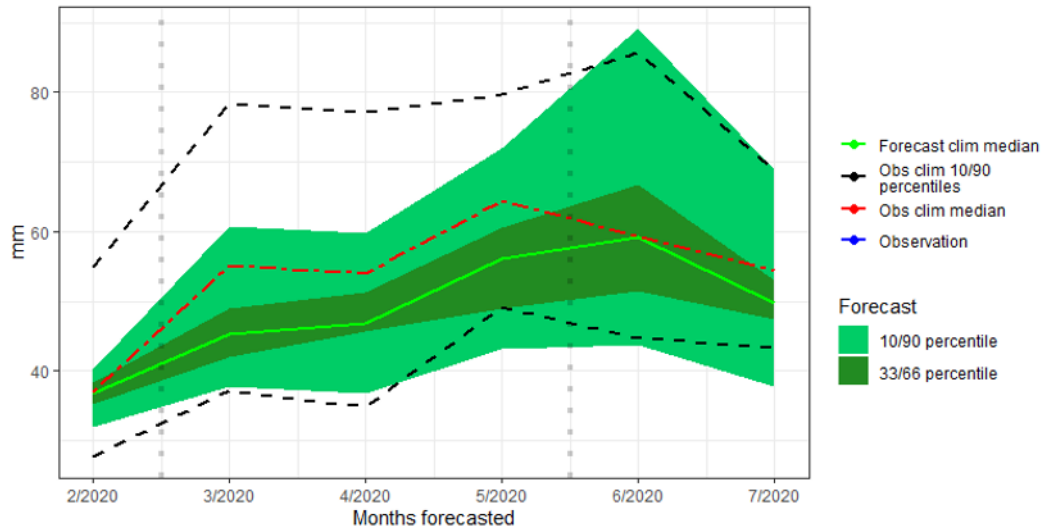


SEASONAL RUNOFF FORECASTS : SPRING 2020

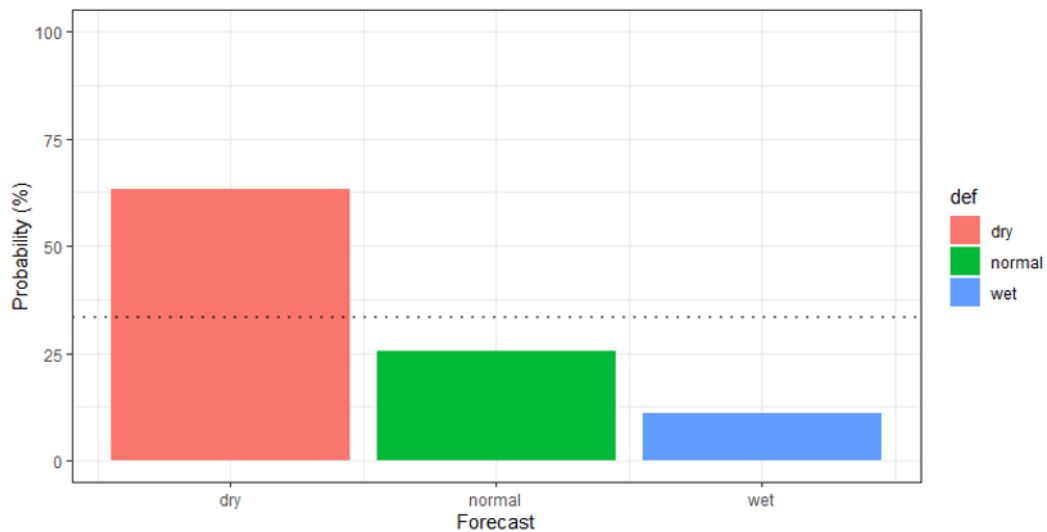
Bias Corrected SPRING FORECAST DISCHARGE - SB65.

year 2020



Seasonal Runoff forecast for SB65.

MAM/2020



Seasonal Runoff Forecast for he Upper Danube

Figure 2 shows the spring runoff for the Upper Danube catchment at Korneuburg near Vienna. The upper plot illustrates the ensemble forecast distribution, with the light-green-shaded areas representing the spread between Q10 and Q90, and the dark-green-shaded area being the spread between Q33 and Q66. The green line correspond to the Q50 (median). Additionally, the black dotted lines (Q10, Q90) and the red dotted line (Q50) are based on historical runoff observations. The lower tercile plot shows a high probability for a dry spring season (>50% of ensembles)